

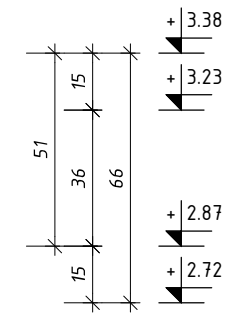
Technical drawing of a bridge deck cross-section and longitudinal section.

**Cross-section (Top):**

- Overall width: 584
- Deck width: 560
- Concrete width: 536
- Reinforcement details:
  - 9#8co30 (80)
  - 2#8 (80)
  - 3x30x17
  - 4#8co30 (80)
  - 7#8co30 (80)
  - 79#22#12co10
  - 78#22#12co10
- Dimensions: 287, 2x30=60, 189, 12, 24, 15, 30, 17, 51, 3.38, 3.23, 2.72, P-0.7.

**Longitudinal section (Bottom):**

- Overall length: 296
- Deck length: 259
- Concrete length: 231
- Reinforcement details:
  - 77#22#12 L=335
  - 78#22#12 L=640
  - 79#22#12 L=242
- Dimensions: 43, 39, 124, 11.



Technical drawing of a square reinforcement cage (81) with dimensions and material specifications:

- Overall width: 24
- Overall height: 25
- Top reinforcement: 2#12 (82)
- Bottom reinforcement: 2#12 (82)
- Left reinforcement: 2#12 (82)
- Right reinforcement: 2#12 (82)
- Internal width: 18
- Internal height: 15
- Top offset: 7
- Bottom offset: 10
- Material: 57 Ø 6co25 (81)
- Reinforcement details: 2#12 (82) at top and bottom, 2#12 (82) on the left and right sides.
- Dimensions: 24, 18, 7, 15, 10, 25.
- Material: 57 Ø 6co25 (81).
- Reinforcement: 2#12 (82).

Technical drawing of a rectangular plate with dimensions and annotations:

- Overall width: 24
- Overall height: 25
- Top edge: 2#12 reinforcement bars, 83 mm from the top edge.
- Bottom edge: 4#12 reinforcement bars, 83 mm from the bottom edge.
- Left edge: 14 Ø 6co15 reinforcement bars, 81 mm from the left edge.
- Right edge: 2.33 mm from the right edge.
- Bottom edge: 2.08 mm from the bottom edge.
- Internal dimensions: 20 (width), 21 (height), 6 (width), 21 (height).
- Annotations: 81, 83, 20, 21, 6, 21, 20, 21.

Technical drawing of a reinforced concrete slab (L=94) showing top and side views.

**Top View:** A rectangle with dimensions 24m (width) and 25m (length). Reinforcement bars are shown: 2#12 at the top, 4#12 at the bottom, and 11#6c15 along the left side. The left side is labeled with a circled 81.

**Side View:** A cross-section showing a total height of 25m. The top reinforcement bar is at +2.75m and the bottom reinforcement bar is at +2.5m. The top bar is labeled with a circled 84 and the bottom bar with a circled 84.

**Bottom View:** A pentagon with dimensions 20m, 21m, 6m, 21m, and 20m.

**Bottom Label:** (81) 11 Ø 6c15 L=94

**SCHODY ŻELBETOWE KLS-1.  
NADPROŻA ŻELB. N-1. ÷ N-4.  
WIENIEC ŻELB. W-1.**

Technical drawing of a reinforced concrete slab (płyta) showing a plan view and a cross-section.

**Plan View:**

- Overall dimensions: 40m (width) x 24m (depth).
- Reinforcement details:
  - Top bars: 4#12
  - Bottom bars: 9Ø6co15
  - Bottom bars: 9Ø6
  - Bottom bars: 5#12
- Labels: KLS-1, KLS-2, podmurówka z gazobetonu, (87), (88).

**Cross-section:**

- Vertical dimensions: 18m, 2.87m, 2.69m, 2.44m, 2.2m.
- Labels: KLS-1, KLS-2, podmurówka z gazobetonu, (87), (88).

**Detail (88):**

- Dimensions: 28, 20, 20, 20, 18Ø6co20.

istn.  
strop/nadpr.

+2.95

50

+2.45

25

+2.2

podmurówka  
z gazobetonu

4 #12 (90)

(89) 11  $\varnothing 6c20$

(89) 11  $\varnothing 6$

4 #12 (90)

(89) 22  $\varnothing 6c20$  L=10

**Beton: C20/25 (B25)**  
**Stal: Ø6- A-0 (StOS)**  
**# - A-III (RB400)**  
**Otulina 20mm**

NAZWA PROJEKTU : <b>ROZBUDOWA, PRZEBUDOWA I REMONT BUDYNKU STRAŻNICY OCHOTNICZEJ STRAŻY POŻARNEJ Z PRZEZNACZENIEM NA LOKALNY OŚRODEK KULTURY W MIEJSCOWOŚCI OLSZEWKA</b>			
ADRES PROJEKTU - <b>OLSZEWKA, DZ.NR 251/1, 251/3 , GMINA JEDNOROŻEC</b> INWESTOR - <b>GMINA JEDNOROŻEC</b> <b>UL. ODRODZENIA 14, 06-323 JEDNOROŻEC</b>			
FAZA PROJEKTU: <b>PROJEKT WYKONAWCZY</b>		BRANŻA: <b>KONSTRUKCJA</b>	
RYSUNEK: <b>SCHODY KLS-1. NADPROŻA N-1. ÷ N-4. WIENIEC W-1.</b>		SKALA	NR RYS.
<b>PROJEKTANT:</b>		<b>1:20</b>	<b>15</b>
		NR STRONY <b>18</b>	
		DATA: MARZEC 2017 R	